



surefootmat



surefootmat®

“enhancing animal welfare under foot”

Sales Hotline: 1800 255 943

www.surefootmat.com.au

RPS Industries P/L 4 Wills Street, Warragul, Victoria 3820

Fax: (03) 5623 3397



Applications



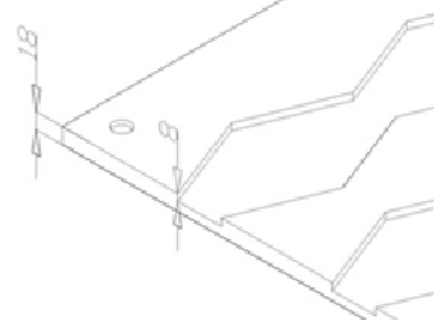
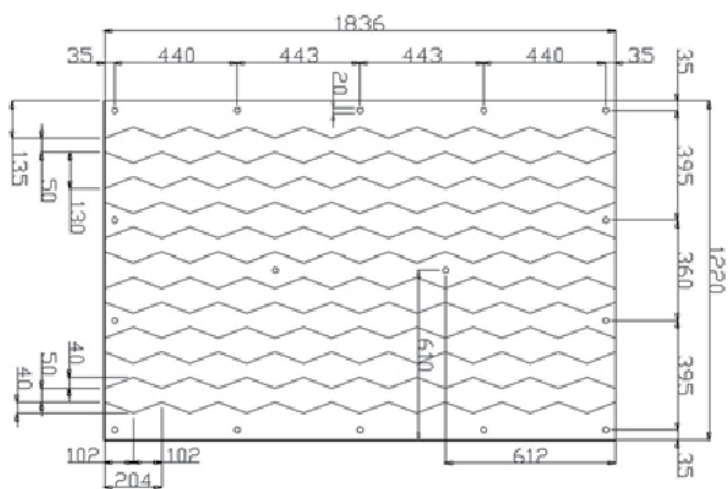
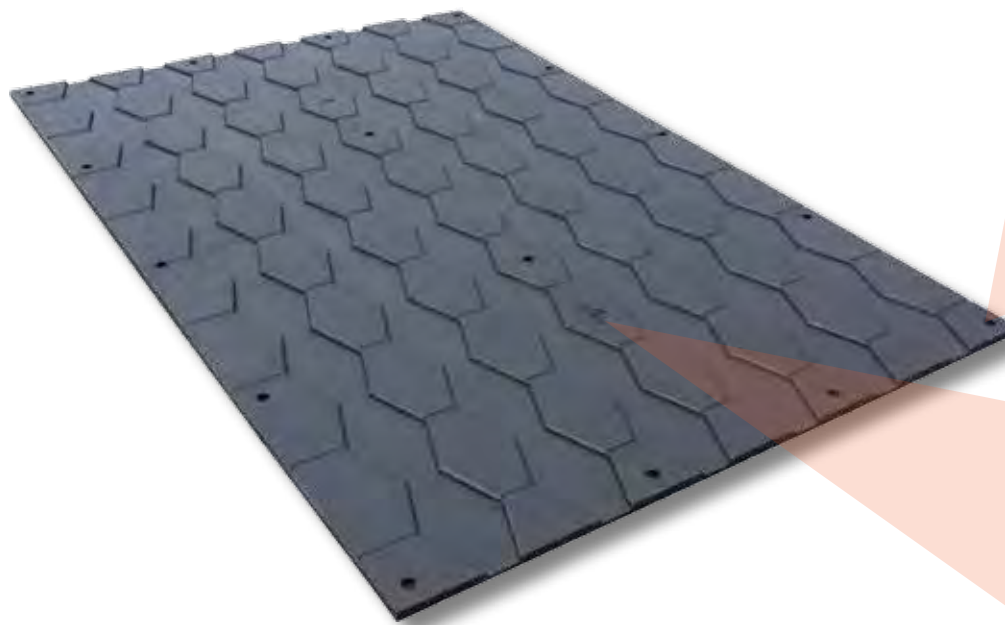
Quick Reference Index

- **Mat Specifications Page**
- **Product in Focus**
- **Testimonials**
- **Saleyard**
 - Case Study: Mt Gambier Livestock Exchange, SA
 - Case Study: Inverell Regional Livestock Exchange, NSW
 - Case Study: Wagga Livestock Marketing Centre, NSW
 - Case Study: Camperdown Saleyards, VIC
 - Case Study: Warrnambool Saleyards, VIC
 - Case Study: Roma Saleyards, QLD
- **Dairies**
 - Case Study: RA and MP Benson, Bena, VIC
 - Case Study: VFN and JA Arnup, Trafalgar, VIC
 - Case Study: G Wade, Traralgar, VIC
 - Case Study: H and J Cook, Dorrigo, NSW
 - Case Study: ? Leslie, Arcadia, VIC
 - Case Study: G Best, Neerim South, VIC
- **Abattoirs**
 - Case Study: Greenhams, Smithton, TAS
- **Feedlots**
 - Case Study: Elders, Charlton, VIC
- **Transport**
 - Case Study: Page Livestock Transport, Carrick, TAS
- **Racecourses**
 - Case Study: Cranbourne Training Centre, VIC

Sales Hotline: 1800 255 943
www.surefootmat.com.au
4 Wills Street, Warragul, Victoria 3820
Fax: (03) 5623 3397



Technical Specifications



SureFoot® Mat Technical Specifications

Thickness	18mm
Width	1220mm
Length	1830mm
Weight	50kg per mat
Material	Rubber (shore hardness 65+2)
Installation Homes	16 per mat
Method of fixing	RPS Concrete Fasteners; Steel Fasteners or Timber Fasteners

Sales Hotline: 1800 255 943

www.surefootmat.com.au

4 Wills Street, Warragul, Victoria 3820

Fax: (03) 5623 3397



RPS SureFoot® Mats can dramatically improve dairy farmers' milk production, can reduce dark cutting in abattoirs by 11% and improve animal welfare in sale yards



Cattle Underpass After



Concrete Surfaces After

Cows Slipping and Spreading

Concrete in milking yards (even cross-hatched) can become very slippery and dangerous at various times of the year. This is particularly troublesome when cows hooves harden.

Cows slipping over in the milking yard is a significant concern for farmers. Impacts include:

- Cows spreading as they attempt to get up causing catastrophic damage to leg tendons and lower spine
- Destruction of the animal (replacement cost and lost production)
- Distress caused to other cows in the milking yard significantly reducing production

How the SureFoot® Mat Solves the Problem

1. It provides a soft and "forgiving" surface that reduces impact and protects the hoof's soft tissue from unnecessary trauma and damage;
2. Its rubber compound improves the grip available to the animals, reducing slippage by as much as 89%;
3. The unique diamond pattern helps provide a secure footing for the animals significantly reducing the incidence of slippage and catastrophic tendon damage.
4. SureFoot® mats are also quicker and easier to clean - saving valuable water and time

Easy Installation

SureFoot® Mats are easily installed over any concrete, metal or timber surface using RPS fixing products.

A Good Investment

SureFoot® Mat is a simple, yet powerfully effective product that helps farmers increase their milk yield without the need for ongoing management or intervention. Once installed, SureFoot® Mats continue to deliver financial and farm management benefits for many years.

Cost Savings to Abattoirs

The study found that animals standing on the SureFoot® mat before being slaughtered between 1 and 5 days resulted in increased sale price of \$20 per head

Positive impact on MSA Standards

The use of the Sure Foot® Mat significantly increased the number of cattle that met MSA standards.

Data obtained by Meat Standards Australia graders showed similar improvements in meat colour and pH.

MLA Verified

The beneficial impacts of the SureFoot® Mats on livestock were verified in an independent research project funded by Meat and Livestock Australia.

Investigations on animal behavior indicated an improvement in animal welfare for those cattle held in pens covered with the SureFoot® Mats. Meat colour and pH readings were both significantly reduced by the use of SureFoot® Mats

Saves up to 67% of water

SureFoot® Mats have been found to reduce water usage during wash down by 67%.

Other applications include:

- Cattle yards
- Cattle Tray Trucks
- Cattle Crushes
- Feed Pads
- Sale Yards
- Scales

Sales Hotline: 1800 255 943

www.surefootmat.com.au

4 Wills Street, Warragul, Victoria 3820

Fax: (03) 5623 3397



Here's what some organisations have to say about the RPS SureFoot® Mat !

"Under trials of 100 head placed on the SureFoot® mat an increased sale price in excess of \$2000 or \$20.00 per head was calculated compared to the same number of cattle placed on the concrete surface.

The SureFoot® mat should be promoted to abattoirs as a way of improving animal welfare and by reducing meat colour and pH to increase carcass sale price.

This surface has also been utilized in milking sheds with cattle, where it has proven to be both durable and easy to clean".

MLA Australia

Extracts taken from Food Safety Operations Pty Ltd report prepared August 2002



"The RSPCA has seen RPS SureFoot® mats in use in major traffic areas at an abattoir and in sale pens at a saleyard.

The RSPCA believes that SureFoot® mats have the potential to improve the welfare of cattle in a range of situations, e.g. in laneways, in holding yards, on trucks, and any other areas where cattle are required to stand for longer periods.

For cattle mats to reduce the discomfort or injury caused by prolonged standing or cattle slipping and falling on hard surfaces, they must be made of an appropriately yielding material while at the same time providing sufficient grip – particularly when the mat is wet.

SureFoot® mats should be well maintained and need to be replaced as soon as they no longer provide the secure footing for which they were designed".

RSPCA Australia



Sales Hotline: 1800 255 943

www.surefootmat.com.au

4 Wills Street, Warragul, Victoria 3820

Fax: (03) 5623 3397



Mt Gambier Livestock Exchange Mt Gambier, South Australia



Like many other saleyards **Mount Gambier Livestock Exchange** understands how a SOFT floor can have a huge influence on the condition of saleyard stock. Particularly when you are attracting store cattle it's important for the buyers to support a yard that has a surface that helps prevent animal lameness.

For the past 2 years Mt Gambier has been trialling several alternative products, but found that most were either slippery or were too expensive. Some yards use sawdust but that was not an option for Mt Gambier as it often retains harmful bacteria and creates a mess and a lot of work for yard staff.

Mike Atwell Exchange Manager had this to say;

"The process of trialling different surfaces has been a challenge, but it was important that we found a solution for animal welfare and to give us a competitive edge.

We currently process 120,000 head per year of which 25,000 are store cattle and without the RPS SureFoot® matting our store buyers would probably go elsewhere.

The initial outcome has been good. . . . I've noticed the animals like to stand on the rubber and often can be found lying down. Also our wash down time has reduced enormously and the amount of water that we use is less.

Overall our investment in the RPS SureFoot® Mat has been positive".



After watching what Warrnambool Livestock Exchange did to improve their yards surface, Mount Gambier installed a trial area using RPS' SureFoot® mats.

The mats provided immediate improvement by eliminating the drainage problems associated with sawdust and a noticeable difference in the general cleaning time and water usage when hosing down the yards surface. The animal's behaviour has seemed to change as they move quieter and are freer than before.

Mount Gambier is the first Livestock Exchange in South Australia to adopt the RPS SureFoot® matting and sees this surface as a major draw card in retaining existing buyers and attracting new ones to their facility.

Sales Hotline: 1800 255 943

www.surefootmat.com.au

4 Wills Street, Warragul, Victoria 3820

Fax: (03) 5623 3397



Case Study

Inverell Regional Livestock Exchange Inverell, New South Wales



Inverell Shire Council's sale yards which was the first ISO 9000 Accredited sale yard in NSW identified the need to implement a flooring system for improved animal welfare.

In early 2008 the owners and agents became concerned about cattle slipping over in the livestock facility so they looked at several possible solutions. The critical places where the animals were slipping over was on exiting the sale pens & in particular the corners and the weighing area. Over the years these hotspots have contributed to valuable animals being downgraded.

Tim McIntyre Livestock Exchange manager said

"During the trials it became very obvious to me that the RPS Cattle mats were a far superior product than the other mats being tested. The animal's behaviour has changed & on approach to the slip areas they walk through with confidence & ease.

Because we knew it was the right product for the right application, we had no hesitation deciding to do all the areas.

After almost a year in commercial use the original Cattle mats still show no signs of wear"



In November 2008 the facility laid several different products for trial including RPS's SureFoot® Mat.

Although the trial was held for 6 months, it became very obvious early on that the SureFoot® Mat was a far superior product. It's ability to ensure stable footing to cattle far exceeded the performance of any other products being trialed.

After the trials were completed in July 2009 the Inverell Shire Council purchased 518 SureFoot® Mats. Their installation began immediately.

With such huge success & a year later in 2010 in the sale yards have bought and installed another 250 SureFoot® mats.

Sales Hotline: 1800 255 943

www.surefootmat.com.au

4 Wills Street, Warragul, Victoria 3820

Fax: (03) 5623 3397



Wagga Livestock Marketing Centre Wagga Wagga, New South Wales



The Wagga Livestock Marketing Centre is unique in its construction & layout. It was one of very few centres remaining with a dirt floor which requires increased maintenance over the more popular 'hard' surface floors. On an average sale day they would sell anywhere between 2,500 to 3,000 head of cattle. The animals are sold in a 'ring' or 'amphitheatre' environment where they are held for about 30 seconds for the bidding and then sent on into the 'flow through system'.

Wagga management spent more than a year searching for a surface solution, but couldn't find anything that would provide similar 'grip' properties to the earth floor, but without the mess & maintenance. Concrete was just out of the question. After almost giving up on looking for a solution, they one day they came across the RPS SureFoot® Cattle mat at a local field day.

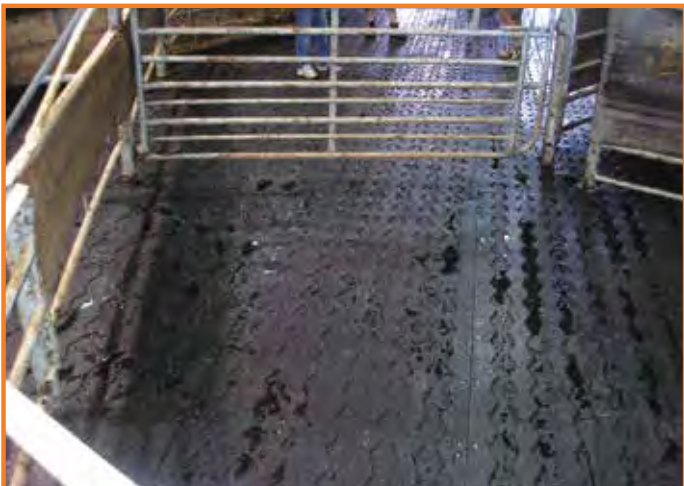
Paul Martin Manager of Wagga Wagga Livestock Marketing Centre had this to say;

"The RPS SureFoot® Cattle mat has eliminated the issue we wanted to resolve without any negative impact.

Prior to the RPS SureFoot® Cattle mat installation we spent at least \$1,000 a month on grit & cleaning costs which has now been reduced to a minimum. The additional benefit is the ammonia odour that used to float around the facility & into the administration offices has completely gone.

The mats have also eliminated the slip problem we originally had at the lead-in area where we had a concrete surface.

If we hadn't found the RPS SureFoot® Cattle mat we'd probably be still looking & using our existing dirt floor".



From discussions with RPS it was determined how the SureFoot® Cattle mat could be best utilized to eliminate the maintenance & mess issues the facility currently experienced. A concrete floor was first laid to provide a stable structure to install the RPS SureFoot® Cattle mat.

After the installation there was an immediate difference especially when it came to cleaning. It eliminated the need to use a bobcat to do the weekly clean of grit & mess, and the ammonia smell that floated through the facility including the offices had completely disappeared after each clean.

The SureFoot® Cattle mat had performed the task it was intended for, and without effecting the 'flow through' rate of the sale yards & the animals are still able to sure foot themselves like they could on the earth floor.

Sales Hotline: 1800 255 943

www.surefootmat.com.au

4 Wills Street, Warragul, Victoria 3820

Fax: (03) 5623 3397



Case Study

Camperdown Saleyards Camperdown, Victoria



Like almost every saleyard in Australia the **Camperdown Saleyards** have experienced cattle in their yards with sore feet. Along with the increasing pressure from animal welfare groups the yards owner Corangamite Shire Council started to look for surfacing options that would suit there application.

After the success of the recent installation of soft-fall matting at the neighbouring Council's yards of Warrnambool, Camperdown management visited the facility to learn the ability of the RPS SureFoot® matting.

Within a short period of time RPS was contacted and a trial in a high risk area within the yards was installed. The RPS SureFoot® Mat provided immediate improvements and a plan was put in place to surface all selling pens.

Allan White Saleyard Manager had this to say;

"The installation of RPS' SureFoot® Mat has provided an outcome a lot better than I expected The cattle are coming off the new surface a lot fresher & the buyers, farmers and agents are much happier.

At night the animals are lying down and need a shake up to get them up in the morning they've very content !!!

It's ridiculous how much easier it is to clean the yards and our water savings would be substantial.

I'm keen to get RPS back to do more areas as I know the benefits of their SureFoot® Rubber surface".



Almost 600 SureFoot® mats covering more than 1200 sq metres were installed only in the selling pens which took 6 days to install.

Now the animals move with confidence knowing their 'Sure Footed'.

Thanks to the RPS SureFoot® Matting foot soreness has now been eliminated and the chance of injury from slipping over has been greatly reduced.

Therefore the buyers are now supporting the Camperdown yards knowing the cattle are in better condition than yards without soft flooring.

Sales Hotline: 1800 255 943

www.surefootmat.com.au

4 Wills Street, Warragul, Victoria 3820

Fax: (03) 5623 3397



Warrnambool Livestock Exchange Warrnambool, Victoria



Over the past few years the **Warrnambool Livestock Exchange** yard's surface had deteriorated to a poor standard and some feedlot buyers weren't going there any more because of the increasing problem of foot soreness and general welfare conditions for the cattle.

RPS approached the Saleyards owner Warrnambool City Council and set up a trial area in a slippery spot of the yard. The **RPS SureFoot®** Mat was installed and the results were immediate, the mat worked and the cattle weren't slipping over like they were before. From the success of this trial the Council then decided rubber flooring was the way to progress.

Paul White Exchange Manager had this to say;

"After consultation with Agents & Animal Welfare Groups I'd been looking for a surfacing solution to give the animals something soft to stand on & that wasn't slippery. then I came across the RPS SureFoot® mat and I was surprised it was as good as it is !

The mat has removed cattle soreness and the animals are now in better condition.

I'd certainly use the RPS SureFoot® Mat again and have already recommended it to other saleyards that are considering soft flooring".



The council's process to award the job was via tender, which ultimately RPS was successful due to the proven performance of the SureFootMat being tested in Warrnambool and for its use in numerous Saleyards, Abattoirs & Dairies throughout Australia.

Since the installation of the new surface the cattle are now more comfortable and can often be seen lying down in the pens at night. In turn the saleyard is now attracting more feedlot buyers which had previously left.

The additional benefit of the SureFoot® Mat has been a substantial reduction in the amount of water needed to wash down the yards, helping to conserve water while also reducing the amount of effluent.

Sales Hotline: 1800 255 943

www.surefootmat.com.au

4 Wills Street, Warragul, Victoria 3820

Fax: (03) 5623 3397



Case Study

Roma Saleyards Roma, Queensland



Roma Saleyards is the **largest cattle selling centre in Australia** with up to 400,000 cattle sold through the facility annually.

Like many saleyards Roma had surface areas with severe concrete stamping which had become very slippery over time. Particularly in the scale areas cattle were regularly slipping over, bruising themselves and then being downgraded.

On a big sale day Roma sells 12,000 beasts and consequently the scale areas become a very busy place. A cow falling over would also upset the facilities throughput greatly costing precious time.

Paul Klar Saleyards Foreman had this to say;

"Our scale areas were becoming a very big problem to us and the welfare of the animals was a major concern so we knew we had to do something urgently.

After some research and earning about the SureFoot® mat gave us great confidence that there was a solution to our problem. RPS showed us their product had been proven in a variety of applications ranging from saleyards to abattoirs.

Overall our RPS SureFoot® Matting is going very well and the agents really like it and we are looking at options to put more of it in other areas of our saleyard".



Roma saleyard's management became aware of the RPS SureFoot® mat at an industry tradeshow and we're so impressed with it they immediately forwarded information to RPS to organize installation of the matting.

In no time RPS was on their doorstep eager to provide the solution to prevent further cattle slipping over of their scales. Due to the severity of the concrete stamping, saleyard staff prepared the base by filling the stamped channels with concrete. This then allowed the SureFoot® mat to sit level over the existing surface before being fastened down. The results were an immediate improvement and the surface now provides an absolutely fantastic outcome for the Roma Saleyards facility and for many agents whom support it.

Sales Hotline: 1800 255 943

www.surefootmat.com.au

4 Wills Street, Warragul, Victoria 3820

Fax: (03) 5623 3397



RA & MP Benson's Dairy Farm Bena, Victoria



Rob & Maureen Benson's dairy pit was not only slippery, but was very uncomfortable on milker's knees when working in the pit.

After time web browsing and researching specialized surfaces for dairies the Bensons contacted RPS to talk about solutions for various areas around their dairy & in particular their pit.

In no time Darrell from RPS visited their dairy and discussed the options to surface the problem areas using 2 different types of rubber flooring. With confidence the Benson's engaged RPS to install their new surfacing.

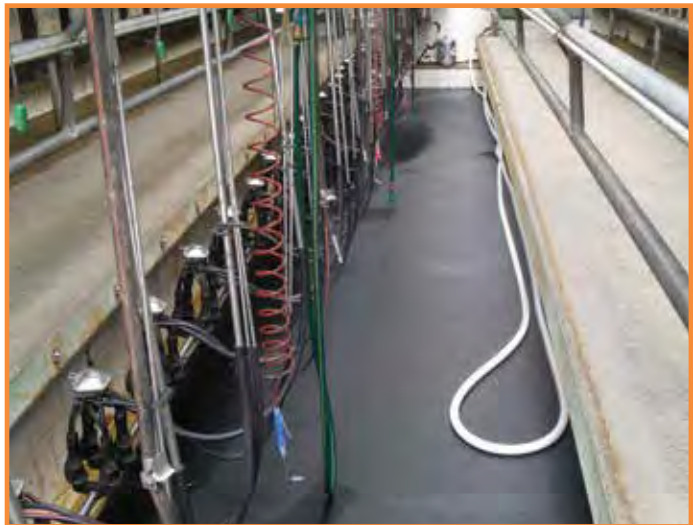
The pit floor was installed with the RPS 'Hammer Insertion' one piece rubber surface which was sealed to the concrete to ensure liquids would not leak under it, and which also provides increased comfort for those working in the area.

Rob Benson dairy farmer had this to say

"The RPS SureFoot® matting is *the best stuff I've ever used around the cow yard in my life* Now my cows aren't slipping over when turning in the yard and they've gone from being nervous as anything to not giving a dam!

The new pit flooring is great too . . . it's better on my knees and our milkers are much more comfortable and find it easier to work.

Before installing RPS rubber surfacing I had an open mind, but it has far exceeded my expectations and I'll be doing more areas with it!"



The 'lead up' yards to the dairy provided a different problem which the Benson's wanted to fix. The RPS SureFoot® mat was the ideal product to ensure a solution. The unique pattern of this mat is designed to sure foot cattle and stop them slipping over when turning. This installs confidence in the animal, increases animal comfort and makes handling of the cows much easier. The chance of the cows slipping and doing the splits is almost eliminated.

Almost immediately after the installation there was a difference and particularly the young cattle weren't being pushed around as much.

Sales Hotline: 1800 255 943

www.surefootmat.com.au

4 Wills Street, Warragul, Victoria 3820

Fax: (03) 5623 3397



Case Study

DAIRIES

VFN & JA Arnup Dairy Farm Trafalgar, Victoria



Arnup's Dairy Farm had been dealing with cows slipping over in their dairy for some time now.

Each time a cow went down Vern knew that he'd have to get the motorbike to drag her out. At least 4 times a year this happened and was not only costly, but took a lot of effort.

Vern first saw the SureFoot® mat at his local dealer & made enquiries and within 3 days his dairy floor was covered in the mats. The first milking the cows were a little apprehensive, but by the 2nd time they were completely comfortable with the new surface. Now the cows will not stand on the small sections that don't have matting and they are a lot quieter & easier to manage.

Vern Arnup dairy farmer had this to say

"It had been costing me about \$10,000 per year losing cows in my dairy until I put the SureFoot® in. The \$2,000 I spent on the mats has only taken me 2 or so months to recover from not losing a cow.

It's the best money I've ever spent they save me time and save me losing cows. Now there's no hassle in the dairy. Even my wife came in and couldn't believe how quiet they were.

I can't say enough about the mats, they're great & I'd recommend them to anyone. Anyone who doesn't put them in has got rocks in their head."



Vern has since put in some additional SureFoot® mats and is now working with RPS to provide a solution for other areas of his farm including the tracks to the dairy which last season caused about 60 head of cattle to have sore feet.

In conjunction with Vern, RPS proposes to install it's Agri-Ground Cell® on the laneways and tracks leading to the dairy which will almost eliminate any maintenance of these tracks and provide a forgiving surface that the cows will be much healthier using.

Sales Hotline: 1800 255 943

www.surefootmat.com.au

4 Wills Street, Warragul, Victoria 3820

Fax: (03) 5623 3397



Case Study

George Wade's Dairy Farm Trafalgar, Victoria

DAIRIES



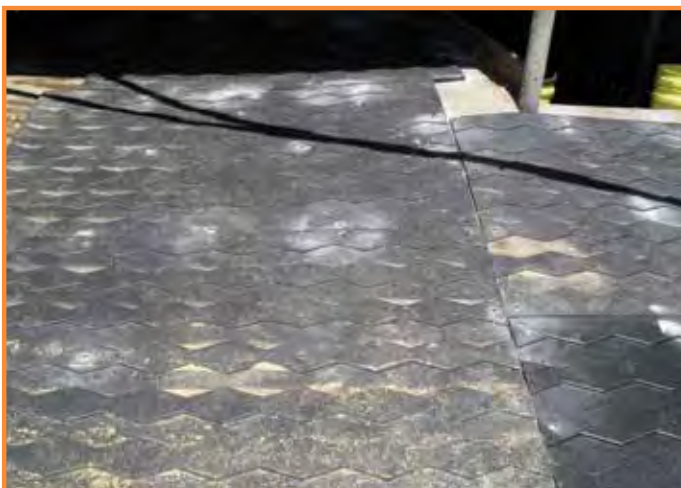
George & Dianne Wade had a **problem in their dairy farm** on their milking platform where the larger cows **kept pushing the younger cattle and causing them to slip over**. This caused ongoing injuries to the smaller animals with an abundance of hip & pelvis breaks, and consequently the loss of heifers during the mornings' milking.

The hatched concrete surface just wasn't working & the Wade's knew they had a serious problem so began looking around for alternative surfaces. George had heard about the RPS 'SureFoot®' Mat, but needed to be convinced that it actually worked.

George Wade had this to say

"My initial reaction to using the RPS SureFoot® Cattle mat was that it looked slippery. After speaking with Darrell from RPS and seeing the product around I decided to give the mats a go.

Immediately after installing the mats it fixed our problem and I wish we had done it ages ago. The cattle now don't slip over at all & the mats work marvellously. I can recommend the RPS SureFoot® Cattle mat to anyone who needs to fix their hotspots or entire yard area."



To test the product on the problem 'hotspot' (entry to herringbone dairy) 8 mats were installed. The results were immediate and fixed George's problem. For the first time in years the cattle moved with confidence and without slipping.

The end result was very positive which led to increased milk production purely from the elimination of injuries to George's herd. Any dairy with a similar problem can be easily corrected with a few SureFoot® Mats and a couple of hours installation.

Sales Hotline: 1800 255 943

www.surefootmat.com.au

4 Wills Street, Warragul, Victoria 3820

Fax: (03) 5623 3397



Case Study

DAIRIES

Heath & Jo Cook's Dairy Farm Dorrigo, New South Wales



About 3 years ago the **Cooks** had a new concrete floor laid in their dairy and learnt very quickly that it was **far too smooth causing their dairy cows to slip**. Over the next 2 years **they lost 6 milking cows** which was both upsetting and costly each valued at \$1,500. Combined with the loss of milk production of \$3,000 per head (6,000 litres p.a. x \$0.50 per litre) the **Cooks valued this at a total herd loss of \$27,000 for the 2 years** (not including lost future lactations).

The Cooks looked around for solutions to their problem and initially could only find concrete etching or grinding, used conveyor belting which was just as slippery as the concrete, and some other rubber matting of lesser quality. Finally after seeing an RPS SureFoot® Cattle mat advertisement in the Land newspaper they made contact.

Heath Cook Dorrigo dairy farmer had this to say;

"We had a major issue with our slippery dairy floor & searched every where for a solution, but it was only when we discovered & tested RPS' SureFoot® Cattle mat that we knew had solved the problem.

*Initially the cattle balked at the matting, but within 2 days they began to enter the dairy quicker & quieter because they were now **sure footed** and confident. Even the smaller cows which normally get pushed around now enter the bails more confidently. As a result of the cows entering & exiting the bails quicker our milking time has reduced and the time to hose out the dairy & water usage has halved.*

Since the SureFoot® Cattle mat installation I haven't lost a beast, so my \$7,000 mat investment has paid for itself in just 6 months".



Firstly, a small number of mats were purchased & installed for testing. For the first 2 days the cattle balked at the new surface, but once the animals became familiar with the new flooring it became evident the mats had made a remarkable difference.

Since the installation of the RPS SureFoot® Cattle mat (which is now over a year ago) the Cooks have not lost one cow. Heath states that the mats are extremely 'user friendly and versatile'. The installation can happen between milking & if you ever need to replace a damaged mat it can be done quickly & easily. Heath especially likes the speed in which the mats' can be hosed down & cleaned.

The Cooks are an example of another satisfied RPS SureFoot® Cattle mat user & Heath has said if he had more areas to install the mats he would not hesitate.

Sales Hotline: 1800 255 943

www.surefootmat.com.au

4 Wills Street, Warragul, Victoria 3820

Fax: (03) 5623 3397



Case Study

The Leslie Farm Arcadia, Victoria

DAIRIES



Sales Hotline: 1800 255 943
www.surefootmat.com.au
4 Wills Street, Warragul, Victoria 3820
Fax: (03) 5623 3397



Case Study

DAIRIES

*Best's Farm
Neerim South, Victoria*



Sales Hotline: 1800 255 943
www.surefootmat.com.au
4 Wills Street, Warragul, Victoria 3820
Fax: (03) 5623 3397



Greenhams Abattoirs Smithton, Tasmania



To produce a Premium grade of meat & to be at the forefront of the industry Greenhams Abattoirs committed to becoming MSA (Meat Standards Australia) accredited about 2 years ago. In order to attain this level of recognition Greenhams identified the reasons why they weren't operating to this level which included an unacceptable Dark Cutting of meat between 20% to 25%.

Greenhams identified that the 'Dark Cutting' was associated with animals being stressed and not warm nor comfortable on the current flooring. Learning about the RPS SureFoot® Cattle mat from Page's Transport (a local livestock carrier) Greenhams initially installed the mats in 6 pens and a laneway as a trial.

Graham Pretty Greenhams Livestock manager said

"The installation of the RPS SureFoot® Cattle mat has dramatically improved the animals condition before slaughtering and continually produces a Premium Grade of meat which has increased our earnings significantly. When you slaughter between 750 & 1000 yearlings a week it doesn't take much to work out the value of RPS SureFoot® Cattle mats which we paid in just 4 weeks.

There is no doubt the animals settle down easier on the matting and we certainly use less water when cleaning them. If I had more yards or were to ever expand the operations I would certainly use the RPS SureFoot® Cattle mat".



It became evident very quickly that the animals behavior had changed. When staff arriving for work in the early hours of the morning discovered as many animals that could fit were sitting on the SureFoot® Cattle matting & those which couldn't were standing and consequently scored a much higher level of dark cutting. This observation lead to the immediate decision to install the SureFoot® mat throughout the entire yard of the abattoir facility.

Since the complete installation of the RPS SureFoot® Cattle mat Greenhams' **Dark Cutting level has reduced to between 5% & 8%** ensuring they continue to produce Premium Grade meat which attains an extra 10 cents per kilogram premium.

Sales Hotline: 1800 255 943

www.surefootmat.com.au

4 Wills Street, Warragul, Victoria 3820

Fax: (03) 5623 3397



Case Study

Elders Charlton Feedlot Charlton, Victoria



With animal welfare at the top of mind of Australia's oldest and most advanced feedlot, **Charlton Feedlot** operators Elders set out investigated a solution that would eliminate cattle slipping over in their facilities.

Charlton, a small town of 2,000 people located in the Mallee in north western Victoria, understood the importance by improving animal welfare in their feedlot would in turn generate greater profits. In particular the 'Induction' area of the facility was a real problem with beasts slipping over and injuring themselves.

The RPS SureFoot® mat was viewed by Charlton operators at other feedlots where similar problem areas were resolved by installing this surface. Charlton contacted RPS and a proposal was submitted.

Charlton Feedlot management had this to say;

"After we installed the RPS SureFoot® mat we experience an immediate improvement in animal grip especially in the drafting area.

The cattle seem to be happy and content when walking over the surface, and they are noticeably quieter too.

We have also installed RPS rubber surfacing into other areas where slipping is of a concern including the walkways for feedlot staff that were previously an OH&S hazard".



An installation of 18 SureFoot® mats were placed at the cattle crush exit and draft areas where animals regularly fell. Only one animal falling over was unacceptable to management.

The new SureFoot® surface provided immediate improvement by eliminating any slipping and fall overs. Consequently Charlton Feedlot has reduced the number of cattle in its hospital pens and has improved their animal growth production rate, yielding increased Profits.

Charlton Feedlots experience with the RPS SureFoot® mat has been more than positive.

Sales Hotline: 1800 255 943

www.surefootmat.com.au

4 Wills Street, Warragul, Victoria 3820

Fax: (03) 5623 3397



Page Livestock Transport Carrick, Tasmania



Page Livestock Transport has a contract to cart cattle from Tasmanian feedlots to abattoirs throughout the state. As the cattle spend up to 130 days in the feedlots they develop soft hooves and when they were transported it lead to foot soreness. The consequences being animals lose their optimum condition & become downgraded in the abattoir.

Pages' trialed many surface materials including sawdust which was messy, difficult to keep clean and overall wasn't solving their problem. They knew the importance to their customers to find a solution as it was continually costing with the loss of meat quality.

Robert – Pages' Livestock Transport Maintenance Manager had this to say;

"We had been trying to find a solution to stop foot soreness & to help the cattle retain their condition for more than a year now & I'd almost given up.....then I came across the RPS SureFoot® mat and it solved the problem immediately!

Our customers are rapt with the result the animals now arrive to them much fresher & in better condition. The mats have removed cattle soreness and have secured our relationship with our abattoir customers.

I'd have no qualm in recommending the RPS SureFoot® Mat, and we continue to use it whenever we can".



Pages' had been looking for a solution for quite some time before they learnt about RPS' SureFoot® mat from a local dealer. They made contact and immediately trialed 25 mats in 1 truck.

With instant success the SureFoot® mat was installed in all their trailers transporting on similar routes.

With this immediate improvement the abattoir customers were so impressed they in turn contacted RPS to discuss the installation of hundreds more SureFoot® mats.

Greenhams Abattoirs in Smithton Tasmania is another success story of the SureFoot® Mat. For more information read our Case Study on Greenhams Abattoirs.

Sales Hotline: 1800 255 943

www.surefootmat.com.au

4 Wills Street, Warragul, Victoria 3820

Fax: (03) 5623 3397



Case Study

Cranbourne Training Centre, Victoria SureFoot® Matting in Underpass



Cranbourne Training Centre the largest Horse training facility in the Southern Hemisphere accommodates up to 800 horses per day.

An underpass which leads horses onto the centre of the ground previously had some old matting which was made up of laid pieces. These rubber pieces moved around, provided trip points, and were often slippery particularly when wet which made the underpass unsafe.

The facility considered several options and had some specific requirements, mainly the surface needed to be rubber and easy to clean.

For some years RPS rubber matting products had been used in other areas of the facility and therefore was approached to forward a proposal on a suitable product for this application.

Simon Hodgson Tracks & Facility Manager had this to say;

"It's normally very difficult to get projects up and running, but working with RPS was fantastic. They worked around us and met the timeframes we needed to stay to."

"When you've potentially got about \$80 million of thoroughbred racehorses training around here, if one slips and does a tendon it makes it a very expensive mistake."

"It was costing us about \$40,000 per year to sand the tunnel to stop slipping, but now with RPS SureFoot® matting I'm saving that money and more importantly, the riders and horses are safer."

"I couldn't be happier with the project outcome and have recommended RPS to others."



Based on the experience and success of RPS' SureFoot® mats Cranbourne Training Centre installed a trial area. The mats provided immediate improvement by eliminating the slippery surface as well as any drainage problems associated with sand which was previously spread over the existing mats for traction and in turn, blocked up the drains.

From this positive outcome Cranbourne Training Centre engaged RPS to complete the entire area of 1000 sq.m. in the SureFoot® mat.

Since the installation the feedback from riders has been unquestionably good and the cleaning of the surface has taken significantly less time and without clogging up drains.

Sales Hotline: 1800 255 943

www.surefootmat.com.au

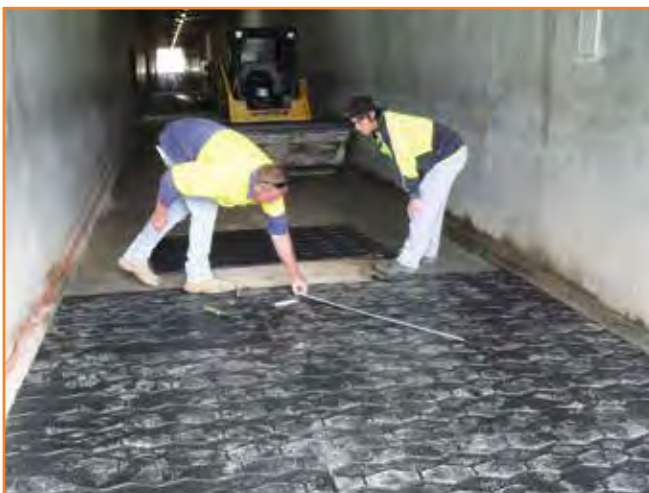
4 Wills Street, Warragul, Victoria 3820

Fax: (03) 5623 3397



Before & After

Cranbourne Training Centre, Victoria



Sales Hotline: 1800 255 943
www.surefootmat.com.au
4 Wills Street, Warragul, Victoria 3820
Fax: (03) 5623 3397





Sales Hotline: 1800 255 943
www.surefootmat.com.au