



RPS
INDUSTRIES



EQUINE

surefootmat®

“enhancing animal welfare under foot”

Sales Hotline: 1800 255 943 Fax: (03) 5623 3397
RPS Industries Pty Ltd - 4 Wills Street, Warragul, Victoria 3820

www.surefootmat.com.au

Quick Reference Index

SUREFOOT® MAT

RECENT
SUREFOOT®
APPLICATIONS

CASE STUDIES

STABLES /
TRAINING
COMPLEXES

TRANSPORT

SAFETY
PRODUCTS

OTHER
MATTING

- **Mat Applications**
 - ProLite® Mat
 - SureCushion® Mat
 - SureFoot® Mat
 - SureFoot® Tailgate Mat
 - Cloth Insertion Roll Matting
 - SureFoot® 'Easy-Fix' System
 - SurePave® Dog Bone Pavers
 - SureGuard® Mats
- **Recent SureFoot® Applications**
- **Case Studies:**
 - Racecourses / Turf Clubs
 - Morphetville Racecourse
 - Cranbourne Racecourse
- **Stables / Training Complexes**
 - McEvoy Mitchell Racing
 - McDonald Equestrian
 - Shane Nichols Racing
- **Transport**
 - Transmend Floats, Trucks and Trailers
- **Safety Products**
 - Guide Posts
 - Retro Posts
 - Post Cushions
 - Speed Humps
 - Wheel Stops
- **Other Matting**
 - Vent Roll
 - Drainage Mat
 - Tread Hex
 - Diamond Mat

ProLite® Technical Specifications

The **ProLite®** mat is a great alternative and is ideally suited to protect animals welfare because of the redesigned diamond pattern. This attractive mat is long wearing and durable.



Environmental Benefits:

Being manufactured from reclaimed SBR / Natural tyre rubber, the **RPS ProLite® mat** is a green product and reduces the carbon foot-print.

Applications:

- Wash bays
- Horse walkers
- Tie up areas
- Breezeways
- Transport

ProLite® Mat Technical Specifications

Thickness	15mm
Length	1830mm
Width	1220mm
Weight	45kg per mat
Material	Natural and recycled rubber
Installation holes	16 per mat
Method of fixing	RPS concrete fasteners; steel fasteners or timber fasteners

ProLite® Photo Application



Gillon McLachlan, Rosebank Polo - Horse Walker



Greenridge Properties- Breezeway



Shea Eden Racing - Wash Bay



Sale Race Track- Wash Bays

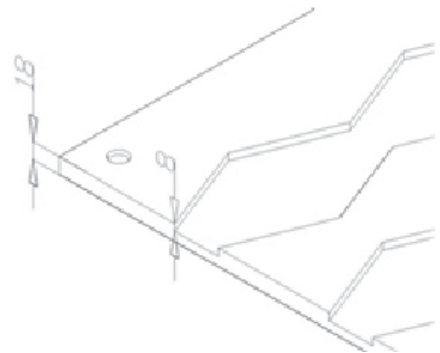
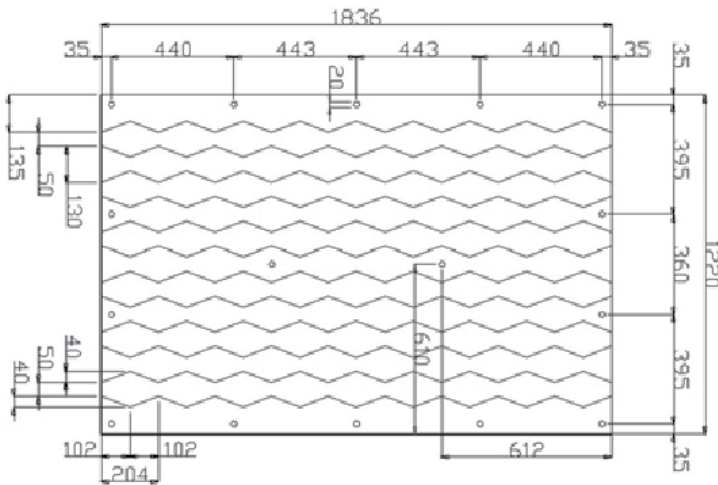
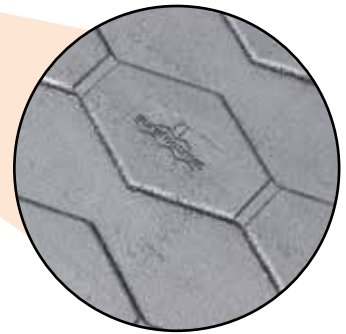
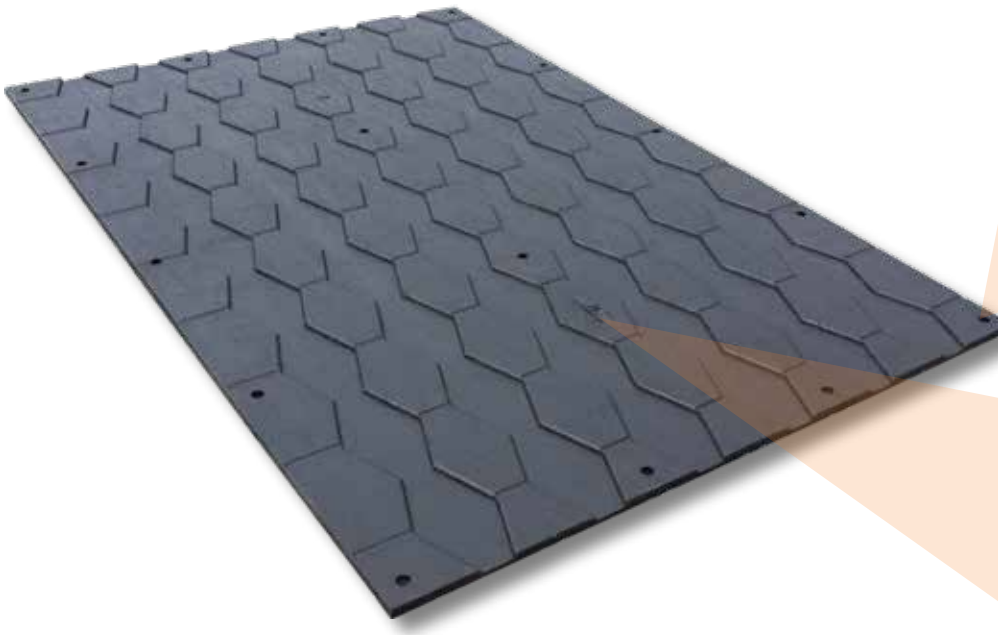


Macedon Lodge – Walkway



Musk Creek Stud Farm - Horse Walker

SureFoot® Technical Specifications

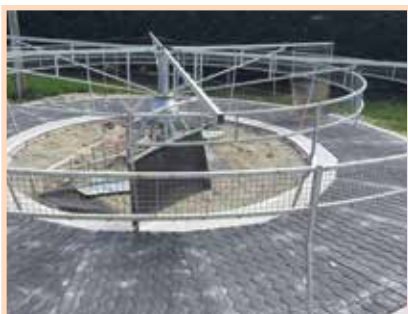


SureFoot® Mat Technical Specifications

Thickness	18mm
Length	1830mm
Width	1220mm
Weight	50kg per mat
Material	Rubber (shore hardness 65+2)
Installation holes	16 per mat
Method of fixing	RPS concrete fasteners; steel fasteners or timber fasteners

SureFoot® Product in Focus

The **SureFoot® Mat** improves 'Welfare for animals and people' by **providing a safer surface under foot!**



How the SureFoot® Mat solves the problem

1. Reduces the OH&S risks to jockeys by providing a 'safer' surface;
2. It provides a soft and 'forgiving' surface that reduces impact and protects the hoof's soft tissue from unnecessary trauma and damage;
3. It's rubber compound improves the grip available to the animals, reducing slippage by as much as 89%;
4. The unique diamond pattern helps provide a secure footing for the animals, significantly reducing the incidence of slippage and catastrophic tendon damage;
5. **SureFoot®** mats are also quicker and easier to clean - saving valuable water and time.

Slipping and Spreading

Asphalt, concrete or other unstable surfaces in equine facilities can be very slippery and dangerous. Combined with the use of metal horse shoes it is a significant concern for operators. Impacts include:

- Potential injury to jockeys when horses fall over
- Spreading as they attempt to get up causing catastrophic damage to leg tendons and lower spine
- Destruction of the animal (replacement cost)
- Distress caused to other horses in the surrounding environment

Easy Installation

SureFoot® Mats are easily installed over any concrete, metal or timber surface using SureFoot® fixing products.

A Good Investment

SureFoot® Mat is a simple, yet powerfully effective product that helps operators maintain a high level of safety without the need for ongoing management or intervention.

Once installed, **SureFoot®** Mats continue to deliver financial and facility management benefits for many years.

Positive Occupational Health & Safety Standards

The use of the **SureFoot®** Mat significantly increases the safety to jockeys, trainers, stable hands and other people working around horses.

Data collected from facilities that use the **SureFoot®** Mat shows outstanding improvements to a safer operating environment.

Cleaner Environment

The use of **SureFoot®** Mats provides exceptional improvement for a cleaner environment. The level of dust from dirty surfaces and the harbouring of harmful bacteria in bedding products is completely eliminated.

Hard Wearing Rubber Compound

The **SureFoot®** Mat is manufactured using a hard wearing and extremely durable rubber compound which has been especially formulated for this purpose. The compound blend of recycled and new virgin rubbers also features superior shock absorbing properties which provides outstanding protection for animals.

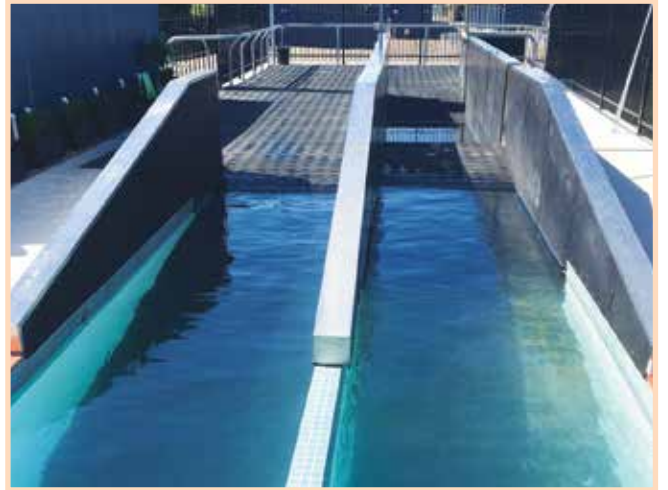
Applications include:

- Breezeways / laneways
- Crossover tracks
- Underpasses
- Equine swimming pools
- Loading ramps
- Racing complex day stalls
- Tie Ups
- Walkers

SureFoot® Photo Application

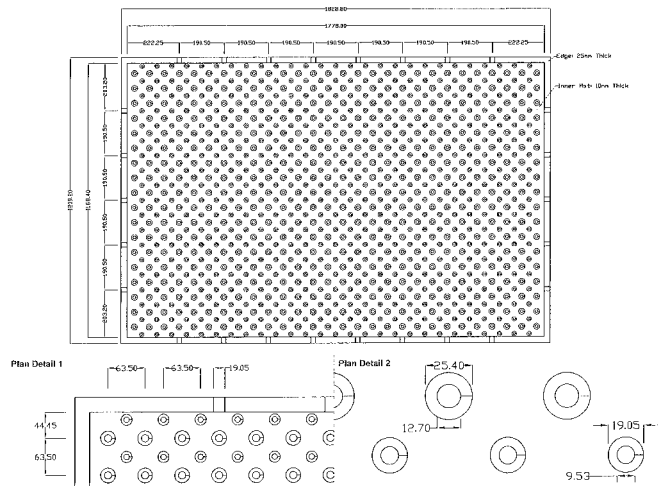


SureFoot® Photo Application



SureCushion® Technical Specifications

RPS's **SureCushion® Mat** provides exceptional cushioning and durability, and dramatically **improves your animal's welfare under foot.**



SureFoot® Cushion Mat Technical Specifications

Thickness	25mm
Width	1830mm x 1220mm x 25mm
Weight	45kg
Material	Reclaimed SBR & natural rubber

SureCushion® Product in Focus

RPS's **SureCushion® Mat** provides exceptional cushioning and durability, and dramatically **improves your animal's welfare under foot.**



Welfare Benefits:

The **RPS SureCushion® Mat** is a revolutionary surface solution which ensures animal welfare under foot.

Benefits:

- Greater animal comfort - provides a soft & warm floor that insulates your horse against cold and dampness.
- Eliminates bedding which can generate harmful dust and costly man hours in mucking out stalls. Bedding can also be displaced leaving exposed floors.
- Unique design allows for exceptional drainage, cushioning and superior ventilation and inhibits bacteria growth.
- High quality rubber compound which is incredibly long lasting.

Environmental Benefits:

Being manufactured from reclaimed SBR/ Natural tyre rubber, the SureCushion® Mat is a 'green' product and reduces the carbon foot-print.

Applications:

- Horse Stables
- Exercise Areas
- Breezeways
- Vet Bays

Another '**Sure**' Solution from **RPS Industries ...**

SureCushion® Photo Application



SureFoot® Tailgate Mats

Technical Specifications & Product in Focus

The **SureFoot® Tailgate Mat** is the ultimate in tailgate mats and offers both *premium quality and appearance*. This attractively 'designed' mat is *aesthetically pleasing, hard wearing and durable*. It provides *maximum traction and safety* during floating for both horses and handlers...

The unique ridged design of the NEW **SureFoot® Tailgate Mat** ensures your horse remains 'surefooted' during floating - protecting both animal and handlers.

Applications:

- Horse Floats
- Goose Necks
- Horse Trucks
- Ramps



Features and Benefits:

- Anti-slip ridging provides outstanding traction for horses which means less spooking and increased safety for animals and handlers
- Non-porous so will not absorb fluids, nor support bacteria growth. It's also very easy to clean.
- High quality rubber compound which is Incredibly long lasting and attractive.
- A single piece can be applied avoiding the need for time wasting butt joints.

Environmental Benefits:

Being manufactured from reclaimed SBR/natural tyre rubber, the **SureFoot® Tailgate Mat** is a 'green' product and reduces the carbon foot-print.

Technical Specifications

Thickness	20mm
Width	2000mm
Length	1500mm
Hardness	5MPA
Material	Rubber

Another '**Sure**' Solution from **RPS Industries** ...

SureFoot® Tailgate Mats Photo Application



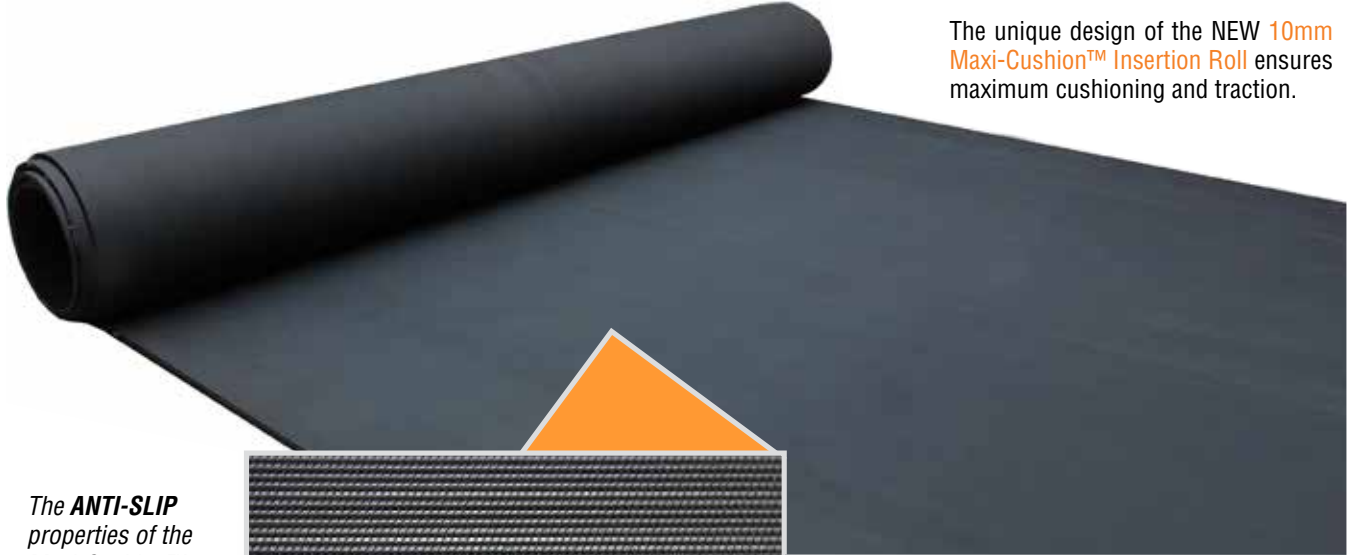
First Point International Airport Loading Bay

Float Tailgate

Cloth Insertion Technical Specifications

“A **durable, anti-slip Maxi-Cushion™ insertion roll** that provides maximum traction and cushioning. Protects animals and humans from stress injuries associated with standing for long periods of time.

The unique design of the NEW 10mm Maxi-Cushion™ Insertion Roll ensures maximum cushioning and traction.



The **ANTI-SLIP** properties of the Maxi-Cushion™ Insertion Roll reduces the risk of injury from slipping and falling. It's thick cushioning protects joints and ligaments.



Applications:

- Breezeways
- Goose Neck Trucks
- Horse Floats

Environmental Benefits:

Being manufactured from reclaimed SBR/natural tyre rubber, the **Maxi-Cushion Insertion Mat** is a 'green' product and reduces the carbon foot-print.

Features and Benefits:

- Thick 10mm cushion that protects animal and human joints and ligaments from stress injury.
- Anti-slip design to reduce the risk of slipping and falling
- Non-porous so will not absorb fluids, nor support bacteria growth. It's also very easy to clean.
- Long length rolls to reduce the need for butt joins

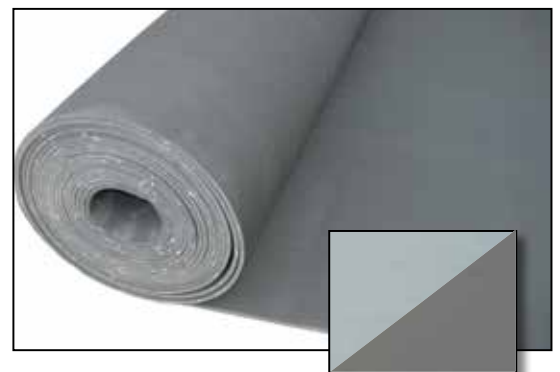
Cloth Insertion Smooth

Features and Benefits:

- Long lengths
- Smooth & textured surface
- Sure hardness 65+/- 5
- Tensile strength up to 10.5mpa
- Easy to handle rolls
- Woven cloth insert for added strength & tear resistance
- Easy to clean

Technical Specifications	
Thickness:	10mm
Width:	2000mm
Length:	10m and 30m
Hardness:	5MPA
Material	Rubber

DEPTH	SIZE	PRODUCT CODE
3.5mm - 1 Ply - Smooth	10m x 1200mm	2001
3.5mm - 1 Ply - Textured	10m x 1200mm	2002
6mm - 1 Ply - Smooth	10m x 1200mm	2003
6mm - 1 Ply - Textured	10m x 1200mm	2004
4.5mm - 2 Ply	10m x 1200mm	2101
6mm - 2 Ply	10m x 1200mm	2102
7.5mm - 2 Ply	10m x 1200mm	2103



Cloth Insertion Photo Applications



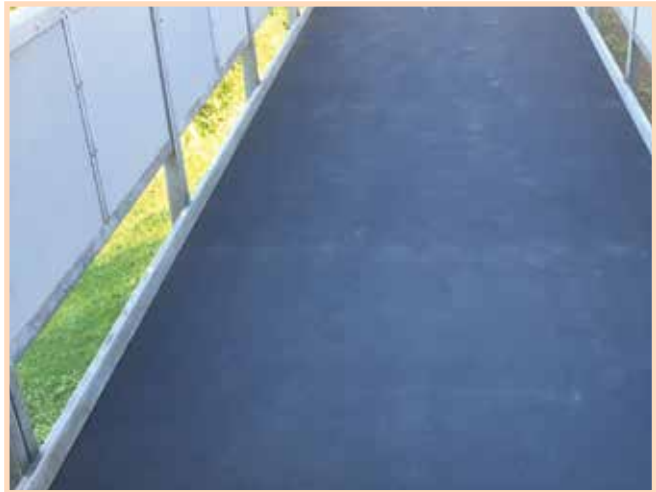
Breezeway - Hammertop



Walling - Smooth Cloth Insert



Vet Room



Entrance ramps - Textured Cloth Insert



Breezeway Hammertop



Walkway Hammertop

SureFoot® Ezy-Fix System

Technical Specifications & Product in Focus

No Concrete? No Problem! The SureFoot® 'Easy-Fix' System enables you to gain all the benefits of the patented SureFoot® Mat without having to first lay a concrete base.



150mm specially designed ground screw for secure fixing.

The SureFoot® 'Easy-Fix' System can be installed directly over dirt and is specifically designed to provide a practical, durable and cost-effective solution for high traffic pressure points such as laneways and loafing pads.

Benefits

- Enhances animal welfare and reduces lameness
- Easy to install, maintain and clean
- Prevents erosion in high traffic areas
- Cost effective - no need to lay a concrete base
- Reduces cross contamination between surface areas
- Excellent load bearing capacity

Applications:

- Laneways
- Crossovers
- Wash bays

Technical Specifications

Thickness	68mm
Mat width	1220mm
Mat length	1830mm
Crush strength	225t/m ²

An 'easy-fix' to a difficult problem . . .



The SureFoot® Easy-Fix System - it's cost effective and it works!

SureFoot® Ezy-Fix System Photo Applications

SUREFOOT®
EZY-FIX



Lindsay Park Racing - Euroa



Ezy-Fix System Installation



SurePave® Dog Bone Pavers

Technical Specifications & Product in Focus

How the **SurePave® Dog Bone** solves the problem.



1. Reduces the OH&S risks to jockeys by providing a safer surface;
2. It provides a soft and 'forgiving' surface that reduces impact and protects the hoof's soft tissue from unnecessary trauma and damage;
3. It's rubber compound improves the grip available to the animals, reducing slippage by as much as 89%;
4. **SurePave® Dog Bone Pavers** are also quicker and easier to clean - saving valuable water and time.

Benefits

- Enhances animal welfare and reduces lameness
- Ideal for horse walkers and breezeways with constant traffic
- Easy interlocking design for less friction thus longer wearing
- High impact and resilience
- Slip resistant finish
- Provides exceptional attractive improvement for a cleaner environment
- **SurePave®** is a hard wearing and durable rubber paver

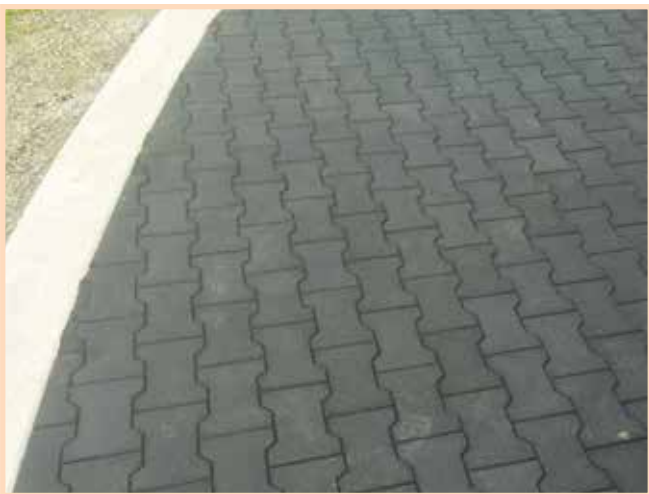
Applications:

- Horse walkers
- Breezeways
- Parade Rings
- Walkways

Technical Specifications

Thickness	23mm and 43mm
Size	160mm x 200mm
Quantity per m ²	37 pavers
Material	Recycled rubber crumb and EPDM

SurePave® Dog Bone Pavers Photo Applications



SureGuard® Mats

Technical Specifications & Product in Focus

*The SureGuard® Protection Mat provides a durable cushion surface to protect your animals and equipment. Easy to install, and able to withstand constant exposure to moisture this mat is a **great all-rounder!***



The protective qualities of the SureGuard® Mat provides versatility and durability with its unique interlocking system for both wet & dry applications.

Technical Specifications	
Thickness	16mm
Width	1220mm
Length	1550mm
Overlap Dimensions	
Thickness	8mm
Width	60mm

Benefits

- Protective quality reduces risk of injury to animals, people and structures
- Durable, easy to clean and install
- Able to withstand extended exposure to moisture
- Versatile and suitable for multiple applications
- Contributes to noise reduction resulting in calmer and easier to handle animals

Applications:

- Training Pools
- Stable Wall lining
- Horse walkers
- Round yards

The **RPS SureGuard® Protection Mat** was initially developed to provide a protective 'cushion' surface for Equine Training pools and areas where 'lashing out' has caused risk to animals and handlers.

The mat needed to be durable, easy to clean, able to withstand constant exposure to water and moisture and of a material that protected horses from injury when entering and exiting the training pool.

The mat has since proven its versatility and is successful in other applications where protective surfacing is required to protect animals, people and structures.

*Another 'Sure' Solution from **RPS Industries** ...*

SureGuard® Mats Photo Applications

SUREGUARD® MAT



Recent SureFoot® Applications

RPS Industries are proud to showcase the recent applications of **SureFoot® rubber mat** and premier locations across Australia.

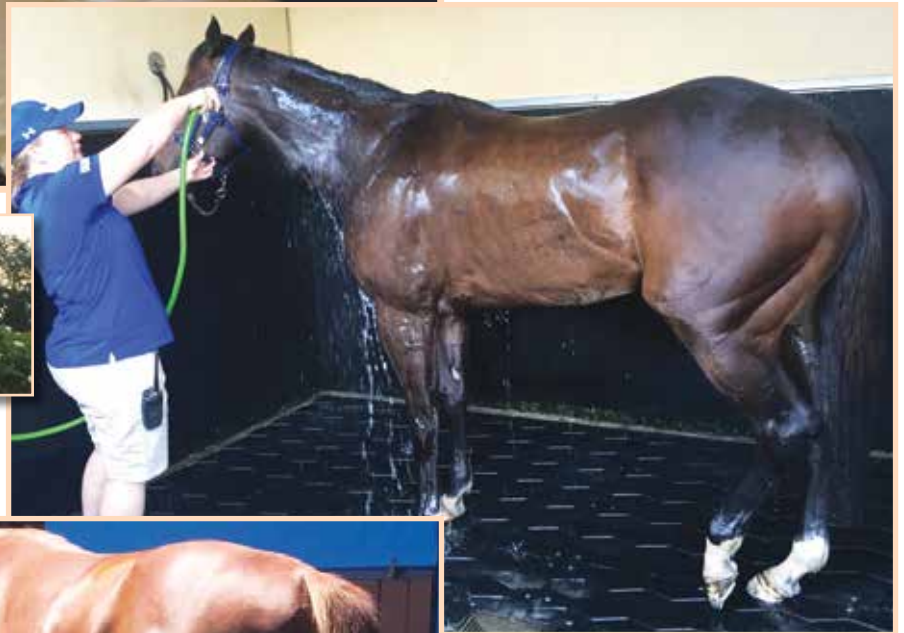
RECENT
SUREFOOT®
APPLICATIONS



Department of Agriculture - New Quarantine Centre in Melbourne



Godolphin Complex Agnes Banks NSW - Wash Bays using Surefoot® mat



Inglis Sales Complex - Oaklands Victoria - Pro-Lite® Mat



Recent SureFoot® Applications

RECENT
SUREFOOT®
APPLICATIONS



Morphettville Racing Club S.A. - Tie-Ups - Surefoot® Mat



Sandown Racing Club - Asphalt Ramp - Pro-Lite® Mat 15mm



Swettenham Stud Nagambie Victoria - Cloth Insertion Rubber

Recent SureFoot® Applications

RECENT SUREFOOT® APPLICATIONS



Newgate Farm Scone - Breezeway covering shed - Cloth Insertion 10mm



Victorian Equestrian Centre - Tie-Ups Pro-Lite® Mat



Wyong Racing Club - Horse Pool - Surefoot® Mat

Recent SureFoot® Applications

RECENT
SUREFOOT®
APPLICATIONS



**MUSK
CREEK
FARM**

*Musk Creek Farm-Stud Flinders Vic -
Horse Walker - Pro-Lite® Mat 15mm*



ROSEMONT
Breeding Brilliance.

*Rosemont Stud Vic - Horse
Walker - Surefoot® Mat and
Pro-Lite® Mat*



Mornington Racing Club

*Mornington Racing Club - Tie-Ups
- Hammertop and Smooth Cloth
Insertion*

Recent SureFoot® Applications

RECENT
SUREFOOT®
APPLICATIONS



Ciaron Maher Racing - Stables - SureCushion® Mat



Danny Frawley - Sylvan Lodge - Stable Complex, Hammertop Cloth Insertion, Pro-Lite® Mat and SureCushion® Mat



Equine Train - Water Walker, Breezeway, Tie-Ups and Wash Bays - Surefoot® Mat and Pro-Lite® Mat

Recent SureFoot® Applications

RECENT
SUREFOOT®
APPLICATIONS



*Future Farms Arabians - Stables
- SureCushion® Mat*



*Macedon Lodge - Breezeway and
Pool - Surefoot Pro-Lite® Mat and
Surefoot® Mats*



*Rowville Horse Floats - Textured
Cloth Insertion*

Case Study for Morphettville Racecourse

SureFoot® Mat for Multiple Applications



Morphettville Racecourse is the premier track of South Australia and home to the South Australian Jockey Club.

The club holds up to 60 race meets a year with in excess of 5,500 starters annually. Up to 400 horses use the facility each day for 6 days per week.

The variability of the current surfacing prompted further research into a more viable and durable product able to withstand the demands of intensive use and to importantly, **provide exceptional safety benefits to horses and riders.**

Parallel trials were undertaken in an intensive use area for a period of 12 months using the RPS **SureFoot® Mat** and an alternative product. The results spoke for themselves as Jason Paech – Operations Manager explains ... **“the SureFoot® matting showed superior durability and slip-resistance, which were the two primary KPI’s critical to the decision”.**

CASE STUDIES

Jason Paech, Operations Manager – had this to say;

*“The **Surefoot®** matting has a significant difference to other products we have used in the past at our venue. It’s ridged ‘diamond’ design provides excellent traction for horses travelling in all directions and in all conditions; however feels very different underfoot.*

In an environment where change can often be questioned, this new product is rapidly gaining acceptance by a very discerning group of stakeholders as a result of how well it ‘wears in’ and acknowledgement, or realization over time, that it is indeed providing an improvement to safety in a high-risk environment.

We would go out of our way to recommend these products for similar applications.... we were impressed by the ‘can-do’ attitude and innovative solutions offered in response to concerns raised throughout our investigation.... The proactive approach adopted, was a welcome surprise... We believe we have the most efficient and cost effective solution available”.



In response to the high performance, cost benefits and versatility of the **SureFoot® Mat**, **Morphettville Race Course installed approximately 2000m² of SureFoot® matting** in various areas throughout the facility including walkways, horse stalls, race day stalls, wash down areas and walk-on / walk-off areas of the equine pool.

Stakeholder confidence in the **SureFoot® Mat** product and the ability of RPS Industries to deliver ‘real solutions’ to complex problems has resulted in proposed further works to be undertaken. These works will address cross-contamination issues identified on a section of crossing between training tracks whereby sand was being transferred between surfaces via the horses’ feet as they crossed over.

It is anticipated the SureFoot® Mat ‘**Easy-Fix**’ System will be installed to **“provide a firm-surface ‘buffer’ to knock sand trapped in horses’ feet before walking over the Pro-Ride, without compromising safety”.**

Case Study for Cranbourne Training Centre

SureFoot® Matting in Underpass



Cranbourne Training Centre the largest Horse training facility in the Southern Hemisphere accommodates up to 800 horses per day.

An underpass which leads horses onto the centre of the ground previously had some old matting which was made up of laid pieces. These rubber pieces moved around, provided trip points, and were often slippery particularly when wet which made the underpass unsafe.

The facility considered several options and had some specific requirements, mainly the surface needed to be rubber and easy to clean.

For some years RPS rubber matting products had been used in other areas of the facility and therefore was approached to forward a proposal on a suitable product for this application.

Simon Hodgson Tracks & Facility Manager had this to say;

"Its' normally very difficult to get projects up and running, but working with RPS was fantastic. They worked around us and met the timeframes we needed to stay to.

When you've potentially got about \$80 million of thoroughbred racehorses training around here, if one slips and does a tendon it makes it a very expensive mistake.

It was costing us about \$40,000 per year to sand the tunnel to stop slipping, but now with RPS SureFoot® matting I'm saving that money and more importantly, the riders and horses are safer.

I couldn't be happier with the project outcome and have recommended RPS to others".



Based on the experience and success of RPS' **SureFoot®** mats Cranbourne Training Centre installed a trial area. The mats provided immediate improvement by eliminating the slippery surface as well as any drainage problems associated with sand which was previously spread over the existing mats for traction and in turn, blocked up the drains.

From this positive outcome Cranbourne Training Centre engaged RPS to complete the entire area of 1000 sq.m. in the **SureFoot® Mat**.

Since the installation the feedback from riders has been unquestionably good and the cleaning of the surface has taken significantly less time and without clogging up drains.

Case Study for McEvoy/Mitchell Racing



Kildalton Park is a multi-faceted state-of-the-art training facility located in Angaston in the heart of the Barossa Valley. It is home to **McEvoy Mitchell Racing** and accommodates up to 80 racing thoroughbreds.

The horses that are trained within the complex represent a substantial investment to the owners and shareholders and providing a safe and progressive environment for both the animals and facility staff is paramount in the complex's commitment in protecting these assets.

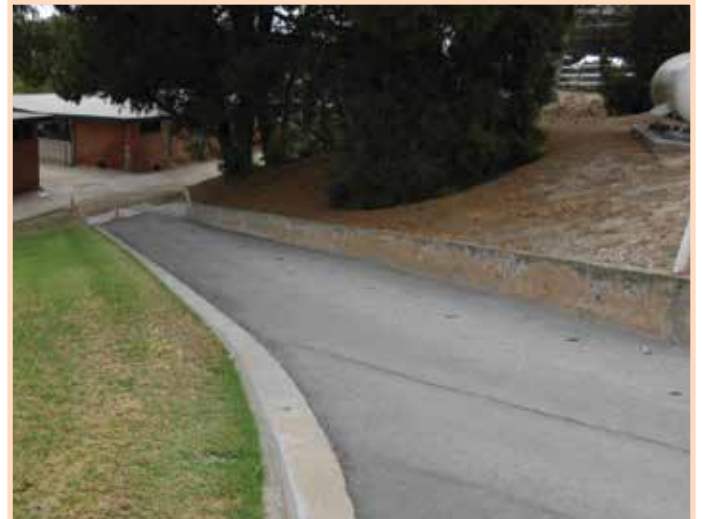
The undulating topography of the centre presented some challenges, particularly in wet weather when the surfaces were prone to becoming slippery.

Spokesperson Dave Gordon – had this to say;

"SureFoot® matting provided an outstanding solution to a horse welfare and work health safety risk when we used it to recommission a steep bitumised path that had become slippery due to wear.

With SureFoot® matting both horse and handler can now access the route with confidence."

The proactive approach of McEvoy Mitchell Racing in the installation of the SureFoot® Equine Mat has ensured that the potential risk to horses and handlers has been substantially reduced.



McEvoy Mitchell Racing became aware of the **SureFoot® Mat** through their association with the Morphettville Race Course. They were impressed with the quality of the **SureFoot®** matting which RPS had installed at the racing club and initially contacted RPS to enquire about matting for their training pool.

During the consultation process, a potentially hazardous area between the stables and walker was identified and in accordance with their risk management strategy, a decision was made to install the **SureFoot® Mat**. The result has been increased traction, smoother transition between areas and reduced risk to staff and horses.

Case Study for McDonald Equestrian



To complete their new 'state of the art' stable complex, **McDonald Equestrian** extensively searched for a surfacing company which understood their specific purpose of the application.

The McDonald's own large horses competing at a high level, which require great comfort and support under foot. Especially after events when there is an increased chance of aching limbs, the comfort of soft yet durable flooring is critical to the horse's recovery.

After being referred, the McDonalds contacted RPS for a solution for their stable complex. As a specialized surfacing provider to the equine industry, RPS understood the McDonald's requirements and was able to recommend surfacing to fit the specific applications within the stable complex.

The McDonald's had this to say;

"We contacted several companies about flooring, but we felt they didn't have the product(s) specific to our purpose. After speaking with RPS we knew they understood the purpose of each application and had the solution to suit our stable.

RPS was flexible and made it work. They spent a lot of time making it perfect which is exactly what we wanted. During the installation they were flexible and responded to our needs. They also made further recommendations.

Now after several months of use, RPS' surfaces have met our expectations. The complex and wash bay is used every day, and I would absolutely recommend RPS to friends and other people".



The challenge with the McDonald's stable was to provide a surface solution to suit each application within the stable complex. After discussion with the McDonalds, RPS recommended a different surface for each area of the complex.

The **SureCushion® Mat** which provides exceptional comfort and warmth was recommended and fitted in the stalls. The **SureFoot® Mat**, ideally suited to areas where slipping is a concern, was placed in the wash bay. This mat provides the horses with greater confidence when being washed and reduces the chance of horses falling over and causing injuries. The final and remaining area was covered with RPS' highly durable and anti-slip 'equine insertion' matting. This forgiving and non-slip surface offers durability to outlast other surfaces of its kind.

Case Study for Shane Nichols Racing



Shane Nichols is a race horse trainer who recently relocated to a new facility in Mornington VIC, where he trains approximately 26 horses at one time.

Upon moving, there was a 20 box stable complex, Wash Bay, Horse Walker and round yard that had to be completed.

After being contacted by our RPS Representative, Shane wanted to give his horses the best possible comfort and support which led him to invest in our rubber matting. This gave them the chance to perform to the best of their ability on race days.

The new concrete flooring in the stables just didn't cut it, so the **RPS SureCushion® mats** were installed providing the horses with added comfort and insulation against the cold. With less bedding needed, there was less mucking out each day and the mats started to pay for themselves straight away. The cushioned feet underneath the **SureCushion® mats** provide aeration and drainage whilst also reducing stress on tendons.

Shane had this to say;

*RPS provided me with the **Sure Cushion® mat**, I was pleasantly surprised how much comfort they gave my horses. It didn't take long before they started to pay for themselves as we use a lot less bedding and labour was reduced dramatically. I feel comfortable knowing that my horses have secure footing when using the **SureFoot® mat** in the walker and wash bay.*

Overall I am pleased with the products and services RPS have provided and wouldn't hesitate to recommend them and their products to others"



The Wash bay was another problem area, again with the new concrete it became slippery when wet. RPS Industries provided Shane with the **SureFoot® mat**, the unique diamond pattern and non-slip surface helped provide a more secure footing so the chance of injury was dramatically reduced.

The **SureFoot® mat** was also installed for the Horse Walker where it is pivotal to have the durability and strength to combat the repetitious tracking of the horses. With the mats being fastened down there is less chance of friction, hence longer wear out of the mat.

With everything in place, the Round Yard was last to be completed. RPS provided 7.5mm smooth Cloth Insertion around the perimeter. This provides the safety of both horse and handler whilst keeping the sand within the boundary of the round yard.

For an added service we installed **SureFoot® mats** in the horse truck to provide a quality mat against the pouring of horses on those long trips to the races.



Float and Trailer Matting

Transmend Floats, Trucks and Trailers are a family owned and operated business which not only manufactures custom built and quality floats and trailers but also undertakes smash-repairs, conversions and refurbishment of existing carriers.

Using only the best steel and finishing products available Transmend trailers are attractive, strong and durable. Phil and Sue take great care in ensuring that every vehicle to leave the factory floor is of premium standard and safe for both horses and humans.

Sue Sporys, joint owner of Transmend Floats Trucks and Trailers had this to say;

"We chose RPS products because of the quality..."

RPS is very efficient and provides good customer service... the products look nice and they do the job!

We'll continue to use RPS matting moving forward and are more than happy to recommend the product to others."



In her search for a quality rubber matting product which was to be **used in around 80% of the trailers produced**, Sue found RPS Industries via the internet and subsequently contacted us for further information and advice.

Impressed with the quality products, the expert advice and the customer service, Sue chose RPS matting products over other brands because of the superior quality. From this, a strong and lasting business alliance was formed and Sue commented that she has found *"the Company's approach and solution-focused recommendations to be 'wonderful'."*

Technical Specifications and Photo Applications

OMNI-FLEX®

STAR DRIVE GUIDEPOST

Star Drive - effortless direct drive design for when the going gets tough!

Technical Specifications				
CODE	PRODUCT	LENGTH	WIDTH	WEIGHT
8021	OMNI-FLEX® Star Drive	1350mm	108mm	2.2kg

MCF POST CUSHION®

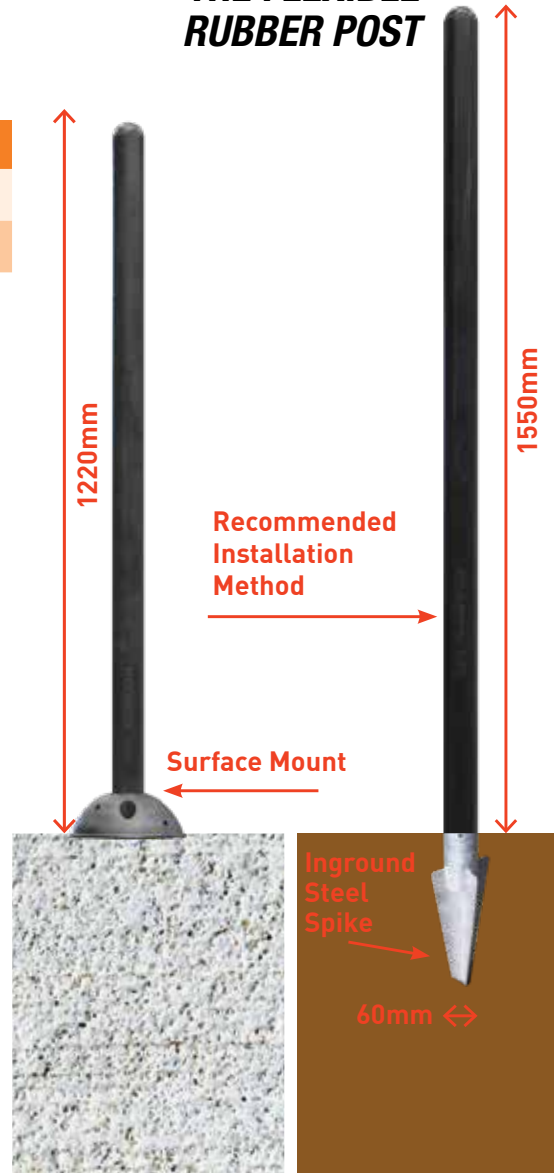
IMPACT FORCE FRIENDLY CUSHIONS



Technical Specifications			
CODE	HEIGHT	WALL THICKNESS	POST DIAMETER
8072	490mm	50mm	50mm x 100mm
8073	490mm	75mm	50mm x 100mm
8070	1000mm	75mm	60mm
8075	1500mm	75mm	60mm

RETRO-POST®

THE FLEXIBLE RUBBER POST



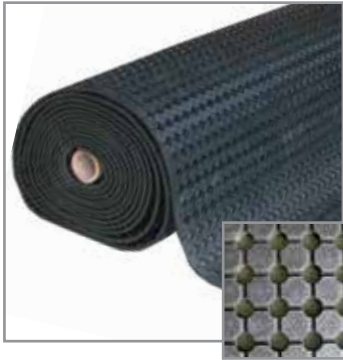
Technical Specifications				
CODE	PRODUCT	LENGTH	WIDTH	WEIGHT
8051	RETRO-POST® 1550mm x 60mm	1550mm	60mm	6kg
8058	RETRO-POST® 1550mm x 70mm	1550mm	60mm x 70mm	6kg
8055	RETRO-POST® 1220mm x 60mm	1220mm	60mm	5.5kg

SPEED HUMPS



WHEEL STOPS





VENT - ROLL

DEPTH	SIZE	PRODUCT CODE
10mm	10m x 1830mm	1401

Applications

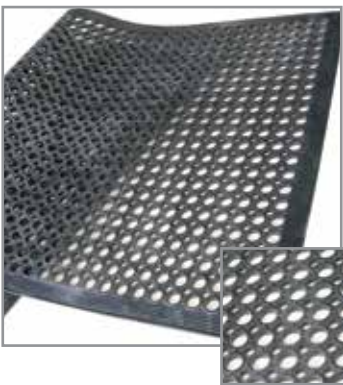
- Drainage pits
- Utes & trailers
- Work areas

Features

- Long lengths
- Large open design
- Anti slip pattern
- Raised pimple on underside

Benefits

- No joins
- Exceptional drainage & ventilation
- Dries quickly
- Allows water & debris to fall through



DRAINAGE - Mat

DEPTH	SIZE	PRODUCT CODE
13mm	1525 x 915mm	3002

Applications

- Drainage pits
- Work areas

Features

- Large open design
- Raised pimples on underside
- Soft, yet hardwearing

Benefits

- Exceptional drainage characteristics
- Allow water & debris to fall through
- Provides cushion effect under foot



DIAMOND - MAT

DEPTH	SIZE	PRODUCT CODE
12mm	1830 x 1220mm	3007

Applications

- Horse floats & stables
- Heavy work areas
- Truck beds

Features

- Surface protection
- Impact absorbing
- Non-porous/absorbing
- Anti slip design

Benefits

- Can cover large areas without movement
- Reduces damage to trays, floors, etc
- Stress relief to animal bones & muscles
- Doesn't soak up any liquids which can lead to bacteria & infections
- Reduces chance of animal slipping



TREAD - HEX - MAT

DEPTH	SIZE	PRODUCT CODE
12mm	1830 x 1220mm	3008

Applications

- Gyms & Football rooms
- Heavy work areas
- Truck beds

Features

- Surface protection
- Impact absorbing
- Non-porous/absorbing
- Anti slip design

Benefits

- Can cover large areas
- Reduces damage to trays, floors, etc
- Avoids bacteria build-up
- Reduces chance of animal slipping



Sales Hotline: 1800 255 943 Fax: (03) 5623 3397
RPS Industries Pty Ltd - 4 Wills Street, Warragul, Victoria 3820

RPS
INDUSTRIES
www.surefootmat.com.au